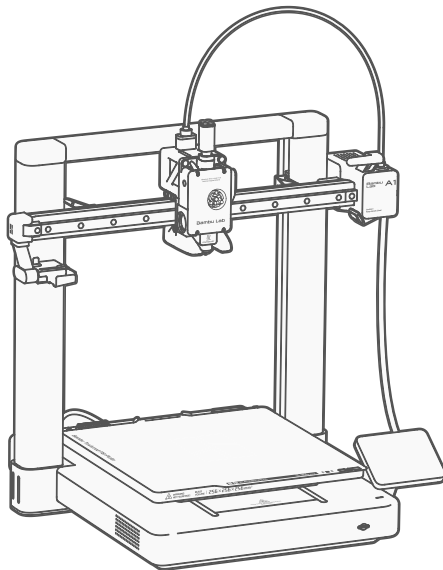


Bambu Lab A1

Quick Start

Please review the entire guide before operating the printer.

* Safety Notice: Do not connect to power until assembly is complete.

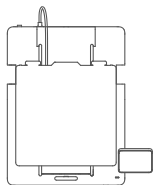


PF002-A

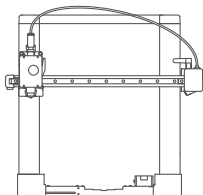


Bambu Studio & Bambu Handy
<https://bambulab.com/download>

What's In The Box



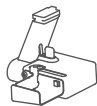
A1 Base Housing



A1 Printer Frame



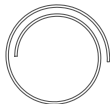
Spool Holder



Purge Wiper



Power Cable



600mm
PTFE Tube



Sample
Filament



Accessory Box



Build Plate

Accessory Box



Unclogging Pin Tool



Allen Key H2



Allen Key H1.5



Heatbed Nozzle Wiper



Cable Organizer



Bambu Scraper Blade



Grease & Oil



Supportive Footpad



BT2.6-8 Screw
(For Scraper)

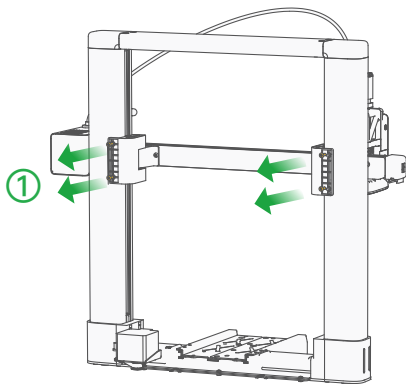


M3-12 Screw
(For Purge Wiper)

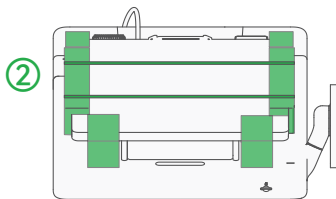


ST3-23 Screw
(For Base Housing)

Remove Packaging

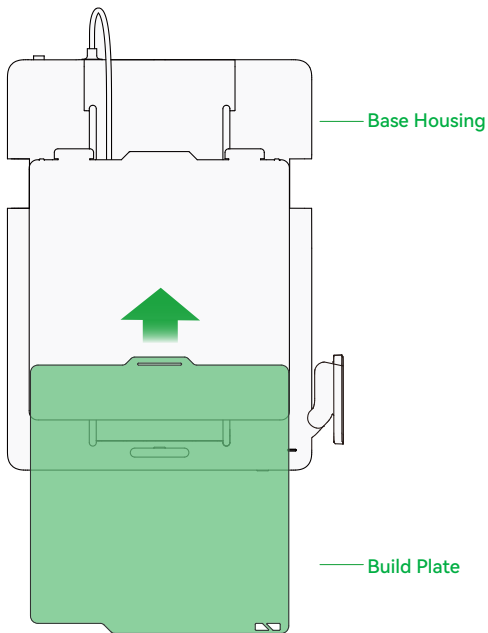


- ① Remove the 4 Z-axis limiter mounting screws and detach the 2 Z-axis limiters.



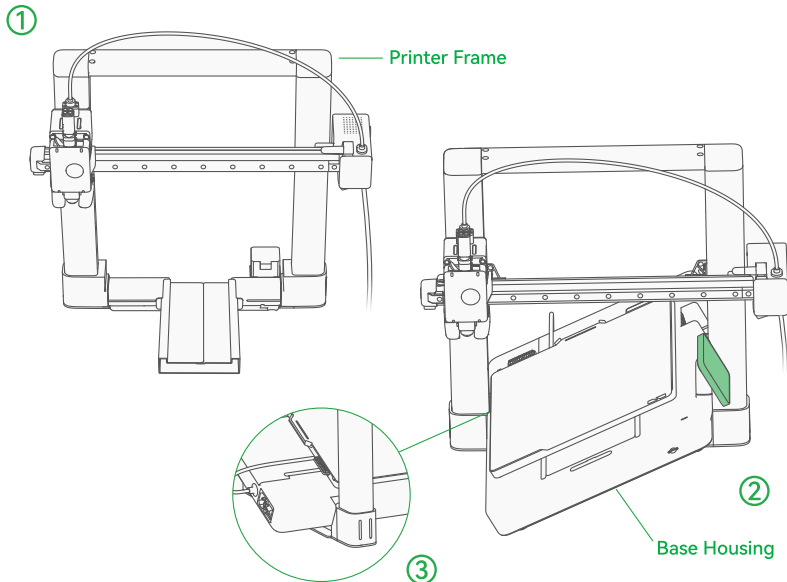
- ② Remove all packaging foams, cardboard wraps and zipties.

Install Build Plate



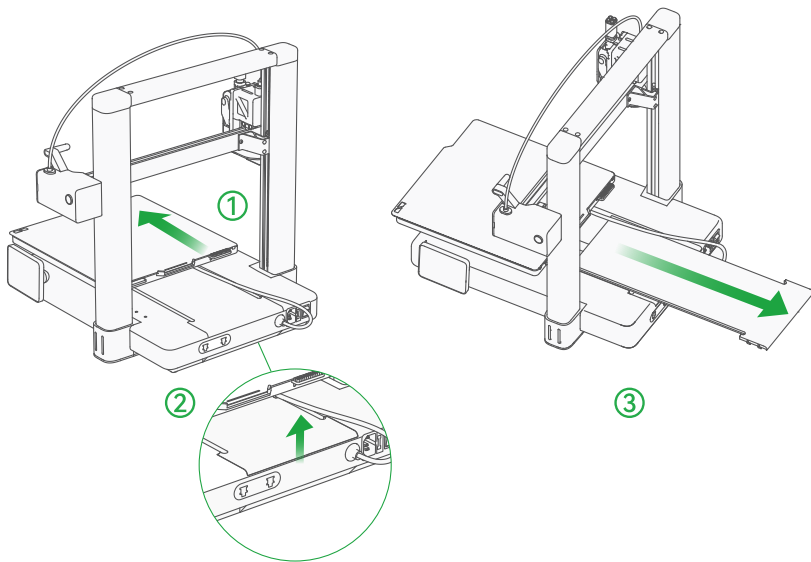
- ① Install the build plate with correct orientation, aligning the edge with the heatbed.

Mate Base Housing & Printer Frame



- ① Put the Printer Frame on the table as shown above.
- ② Tilt the Base Housing about 45 degree to pass through the Printer Frame.
(Use the screen as indicator for orientation)
- ③ Align the slot with the Printer Frame as shown in the diagram.
- ④ Slowly lower the Base Housing until it is fully flush with the Printer Frame on the table.

Remove Y-Axis Cover

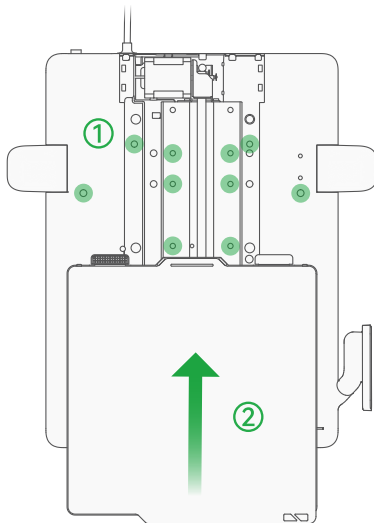


① Push the heatbed fully to the front end, where the screen is located.

② Open the Y-axis cover.

③ Pull out the Y-axis cover gently.

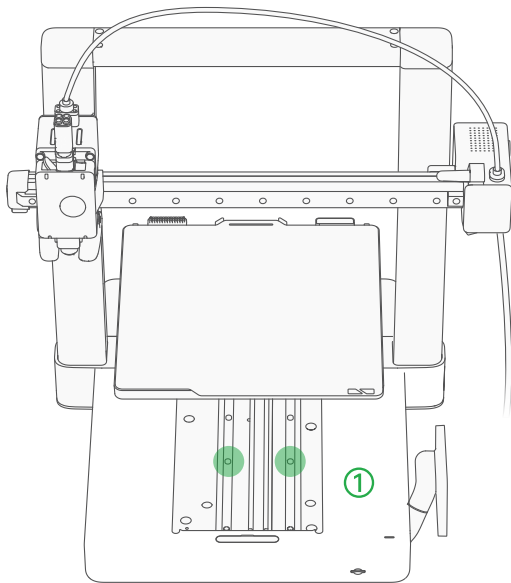
Lock Base Housing



① Install 10*ST3-23 Screws (For Base Housing) in the holes highlighted in green.

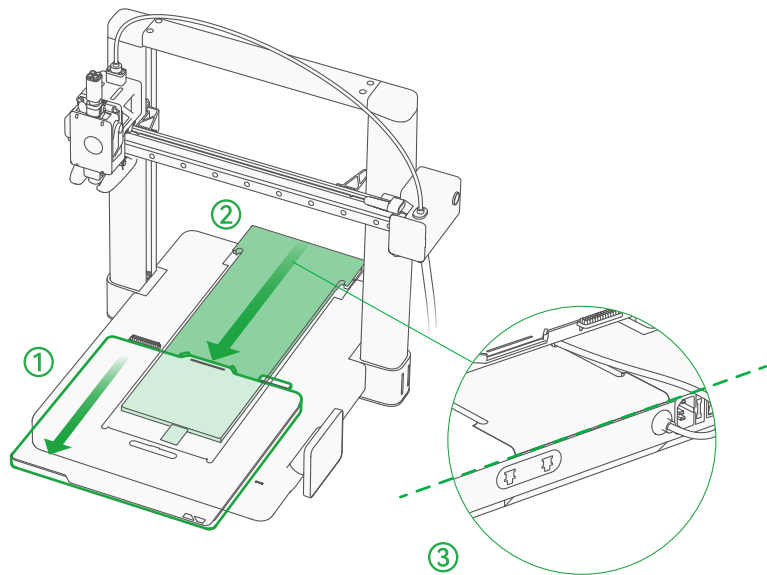
② Push the heatbed to the other end.

Lock Base Housing



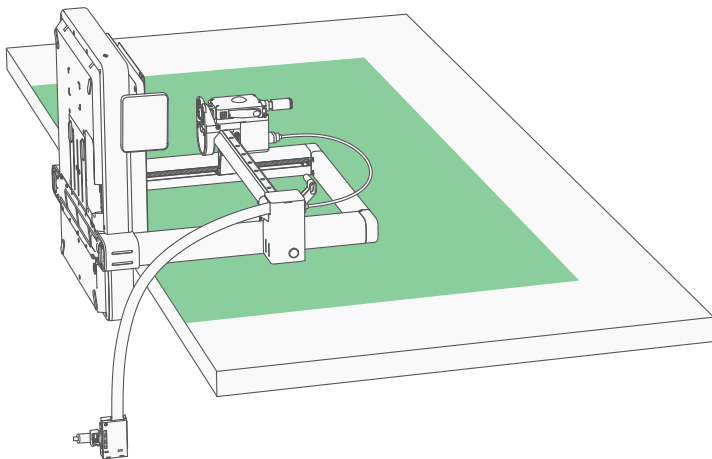
- ① Install 2*ST3-23 Screws (For Base Housing) in the holes highlighted in green.

Put Cover Back



- ① Push the heatbed fully to the front end, where the screen is located.
- ② Gently slide the Y-axis cover back into place.
- ③ Make sure to align the clip.

Place On Table

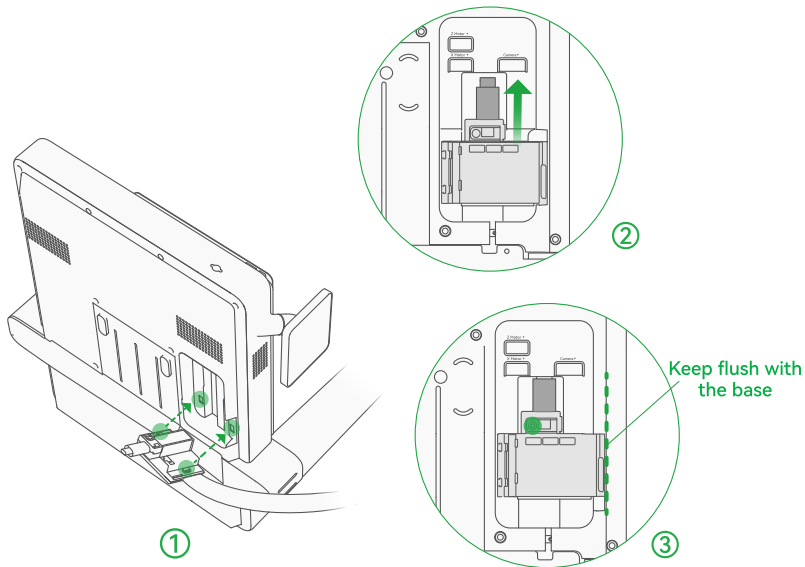


① Turn the A1 90 degree onto its rear, laying it on the edge of a table.

(It is recommended to cover the table with cardboard for protection.)

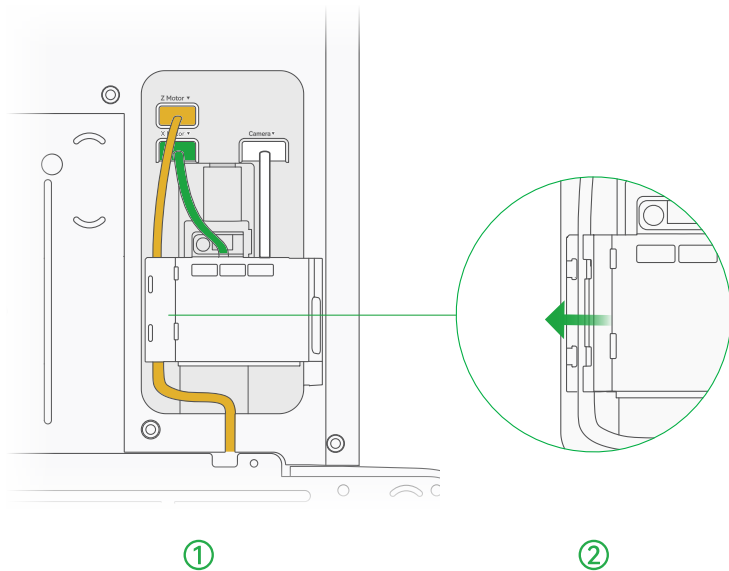
Please make sure the printer is secure on the table while following the steps.

Plug In Cable Box



- ① Align the 2 clips on the cable box with the holes on the Base Housing.
- ② Slide up the cable box until the Type-C cable clicks in place. (DO NOT force the insert.)
- ③ Make sure the cable box is nice and flush in the slot, then screw in the pre-installed screw highlighted in green.

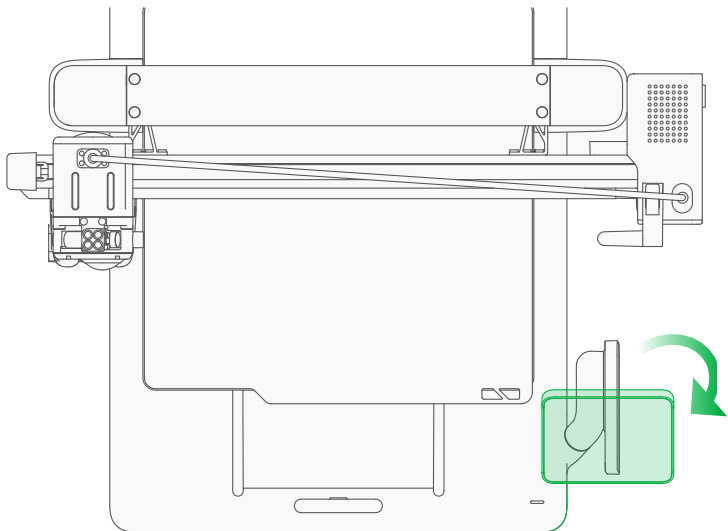
Plug In Connectors



① Plug in the 3 harnesses according to color.

② Tuck the harness into the cable slot and then close the cover.

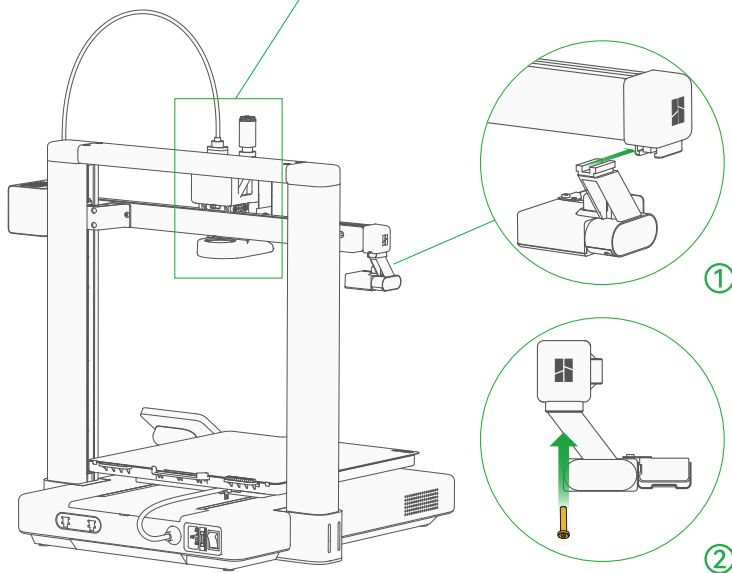
Fold Out Touch Screen



- ① Fold out the touch screen. Make sure the touch screen is in place as shown in the graph.

Install Purge Wiper

Push the toolhead to the middle of the rail, leaving enough space for purge wiper installation.

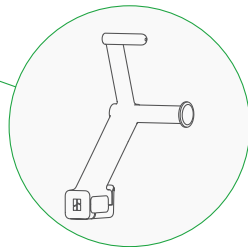
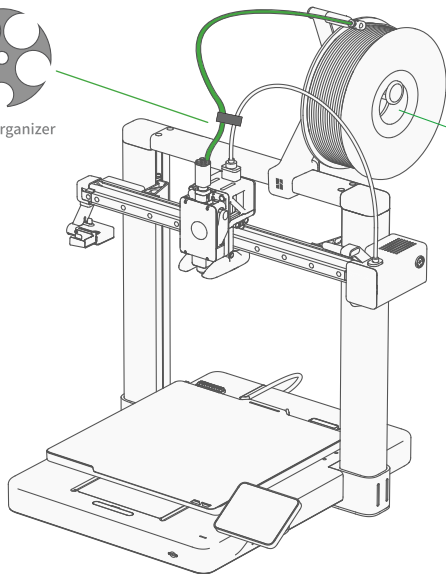


- ① Slide in Purge Wiper unit into the slot at the end of the X-axis.
- ② Install the 1*M3-12 screw from the accessory box to fix the Purge Wiper in place.

External Spool (for non-AMS use case)

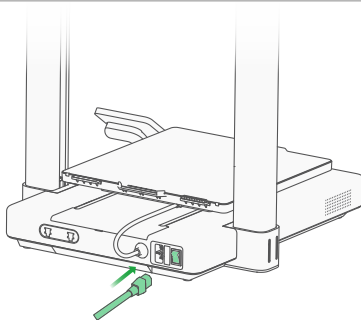


Cable organizer

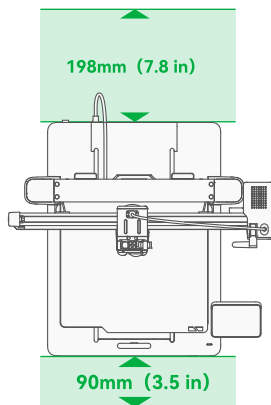


- ① Assemble the spool holder.
- ② Connect the toolhead filament inlet (either one of four) and the filament guide with the 600mm PTFE tube as shown in the diagram.
- ③ **Important.** Important. Clip the black data cable into the smaller hole of the organizer. Do not skip this step as it can lead to printer damage during use.
- ④ Hang filament spool on spool holder then feed the filament line into the PTFE tube as shown in the diagram.

Powering On

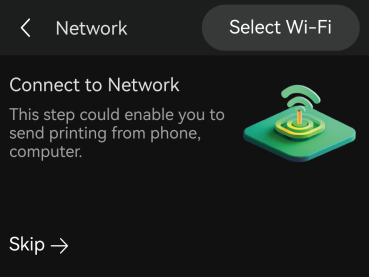


- ① Plug in the power cable and turn on the A1 using the power switch on the back.

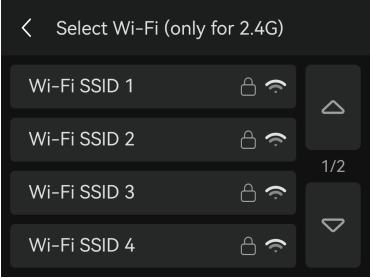


- ② Please leave a safety margin:
198mm at the back and 90mm at the front.

Network Setting



① Follow the instructions until you see this screen. Press “Select Wi-Fi” to search for available network.



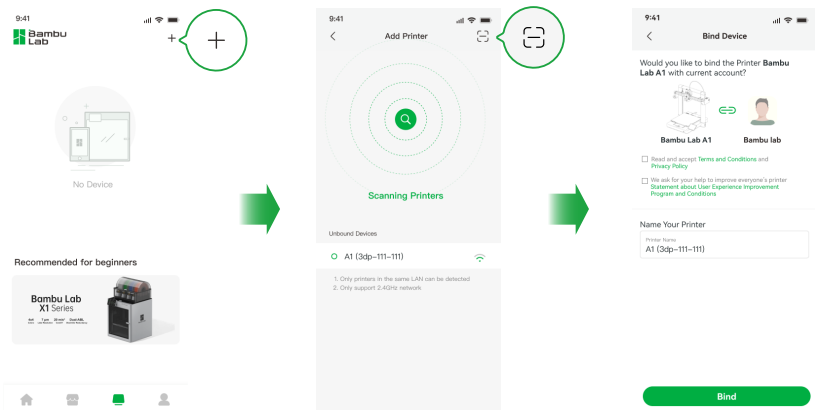
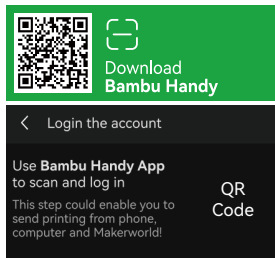
② Select your preferred network.



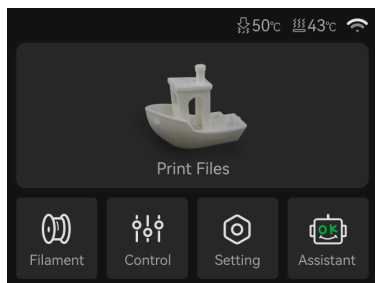
③ Input the passcode, and then press “OK”.

Printer Binding

- ① Download the Bambu Handy App. Register and log in to your Bambu Lab account.
- ② Use Bambu Handy to scan the QR code on the screen, and bind your printer to your Bambu Lab account.
- ③ Follow the instructions on the screen to complete the initial calibration. It is normal to have vibration and noise during the calibration process.



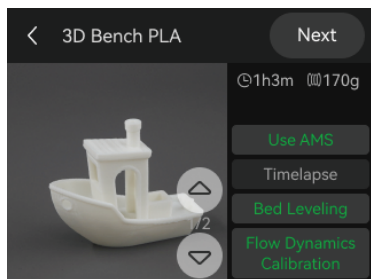
First Print



- ① Press “Print Files” to access the preloaded models on the SD card.



- ② Select the model you want to print.



- ③ Turn on “Use AMS” if you are using filaments on AMS.

Turning on “Bed leveling” is recommended.

Turn on “Timelapse” for timelapse video recording.

Specification

Item		Specification
Printing Technology		Fused Deposition Modeling
Body	Build Volume (W×D×H)	256*256*256 mm ³
	Chassis	Steel + Extruded Aluminum
Toolhead	Hot End	All-Metal
	Extruder Gears	Hardened Steel
	Nozzle	Stainless Steel
	Max Hot End Temperature	300 °C
	Nozzle Diameter (Included)	0.4 mm
	Nozzle Diameter (Optional)	0.2 mm, 0.6 mm, 0.8 mm
	Filament Cutter	Yes
	Filament Diameter	1.75 mm
Heatbed	Compatible Build Plate	Bambu Textured PEI Plate Bambu Cool Plate
	Max Build Plate Temperature	100 °C
Speed	Max Speed of Tool Head	500 mm/s
	Max Acceleration of Tool Head	10000 mm/s ²
	Max Hot End Flow	28 mm ³ /s @ABS (Model: 150*150 mm single wall; Material: Bambu ABS; Temperature: 280 °C)
Cooling	Part Cooling Fan	Closed Loop Control
	Hot End Fan	Closed Loop Control
Supported Filament	PLA, PETG, TPU, PVA	Ideal
	ABS, ASA, PC, PA, PET, Carbon/Glass Fiber Reinforced Polymer	Not Recommended
Sensors	Monitoring Camera	Low Rate Camera (up to1080P) Timelapse Supported
	Filament Run Out Sensor	Yes
	Filament Odometry	Yes
	Power Loss Recover	Yes
	Filament Tangle Sensor	Yes
Physical Dimensions	Dimensions (W×D×H)	465*410*430 mm ³
	Net Weight	8.3 kg

Specification

Electrical Parameters	Input Voltage	100-240 VAC, 50/60 Hz
	Max Power	1300W@220V, 350W@110V
Electronics	Display	3.5 inches 320*240 IPS Touch Screen
	Connectivity	Wi-Fi, Bambu-Bus
	Storage	Micro SD Card
	Control Interface	Touch Screen, APP, PC Application
	Motion Controller	Dual-Core Cortex M4
Software	Slicer	Bambu Studio Support third party slicers which export standard Gcode such as SuperSlicer, PrusaSlicer and Cura, but certain advanced features may not be supported.
	Slicer Supported OS	MacOS, Windows
Wi-Fi	Frequency Range	2412 MHz - 2472 MHz (CE) 2412 MHz - 2462 MHz (FCC) 2400 MHz - 2483.5 MHz (SRRC)
	Transmitter Power (EIRP)	≤ 21.5 dBm (FCC) ≤ 20 dBm (CE/SRRC)
	Protocol	IEEE 802.11 b/g/n



Bambu Studio
Bambu Handy

<https://bambulab.com/download>



Bambu Lab

Enjoy!

www.bambulab.com